



SYC6028



KEY FEATURES

- One machine for multiple uses
- Energy-saving and high efficiency
- Safe and reliable
- Convenient transportation

Operating Weight

59,000 kg / 130,072 lb
No attachment

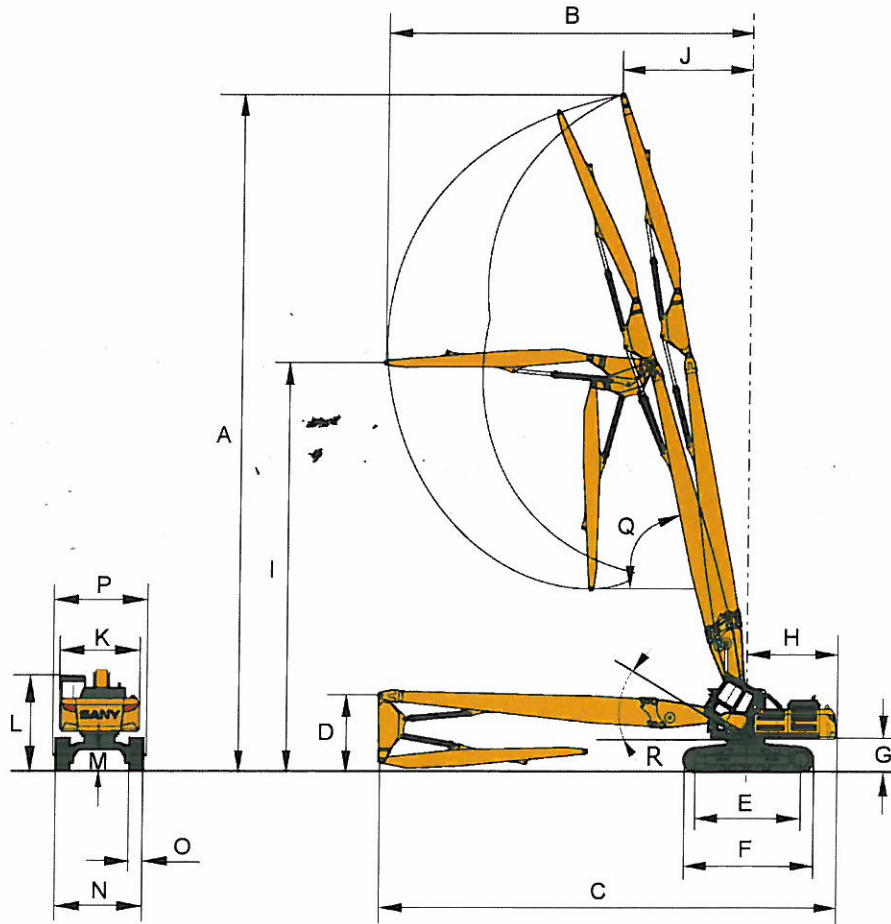
Rated Power

300 kW / 402 Hp
@ 1800 RPM

Max Hydraulic Shear Weight:

2400 kg / 5,291 lb

SYC6028 Dimensions & Specifications



OVERALL DIMENSIONS

	Standard	Metric
A Max Operating Height	92' 4"	28,151 mm
B Max Operating Reach	50' 2"	15,288 mm
C Transport Length	64' 8"	19,700 mm
D Transport Height	11' 8"	3550 mm
E Length Center Idler to Center Sprocket	14' 6"	4415 mm
F Track Gauge	17' 10"	5440 mm
G Counterweight Height	4' 5"	1335 mm
H Tail Swing Radius	12' 10"	3915 mm
I Working Height at max reach	55' 10"	17,026 mm
J Min Swing Radius	17' 11"	5469 mm
K Upper Width	10' 10"	3290 mm
L Cab Height	11' 5"	3470 mm
M Ground Clearance	1' 10"	560 mm
N Track Width	10' 11"	3340 mm
O Track Shoe Width	24"	600 mm
P Transport Width	11' 0"	3360 mm
Q Max Boom Angle		75°
R Cab Tilt Angle		30°

MACHINE PARAMETERS

	Standard	Metric
Operating Weight (no attachment)	130,073 lb	59,000 mm
Max Work Attachment Weight	5,291 lb	2400 mm
Max Working Height	92' 4"	28,151 mm
Max Working Reach	50' 2"	15,288 mm
Min Working Height	25' 1"	7636 mm
Min Swing Radius	17' 11"	5469 mm
Engine Rated Power @ 1800 rpm	402 hp	300 kw
Engine Type	Isuzu	
Engine Displacement	958 cu in	15.7L
Main Pump Flow	2x95 gpm	2x360 lpm
Fuel tank Capacity	180 gal	680L
Hydraulic Tank Capacity	132 gal	500L

SANY America Inc.

318 Cooper Circle | Peachtree City, GA 30269
T: 678-251-2810 | F: 770-632-7820

www.sanyamerica.com

